



KCCM-MD S $\frac{3}{8}$ " + $\frac{1}{2}$ "

2372956-06.2024

40 KWIK CAST CONNECT
KCCM-MD S $\frac{3}{8}$ " + $\frac{1}{2}$ "
ORG-YEL
#2363088



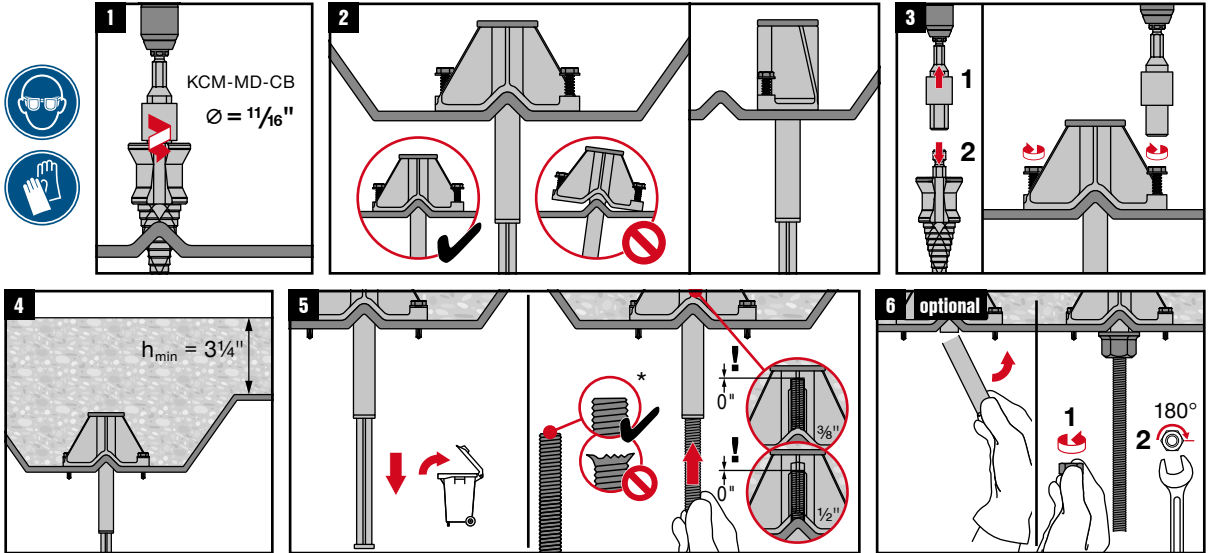
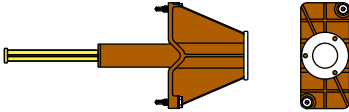
Info | Shop



qr.hilti.com/2363088

Batch Tracking
Information

Made in Taiwan
Hilti = trademark of Hilti Corp., Schaun, LI



For seismic bracing applications cut tube flush to bottom of metal deck. *End of rod must be free of burrs. When using a high-strength rod (>55 ksi) end must be chamfered.