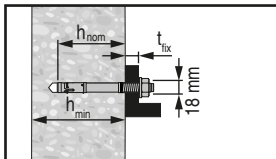
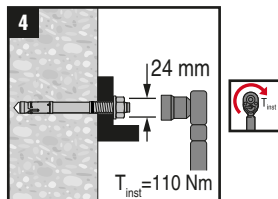
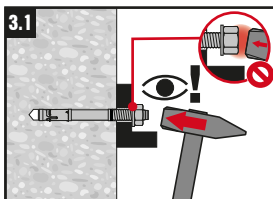
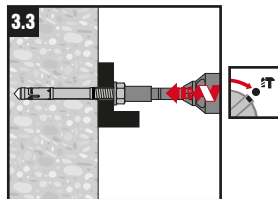
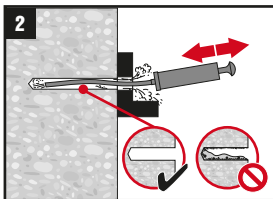
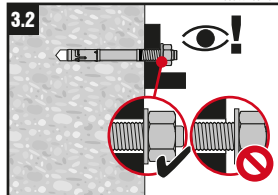
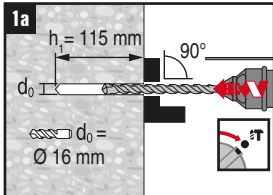


HST-HCR

M16x140/25	✓
M16x165/50	✓
M16x215/100	✓
M16x255/140	✓
M16x295/180	✓



HST	t_{fix} [mm]	length [mm]
M16x140/25	25	140
M16x165/50	50	165
M16x215/100	100	215
M16x255/140	140	255
M16x295/180	180	295

HST	HST-HCR
-----	---------

h_{nom} [mm] 95

h_{min} [mm] 160