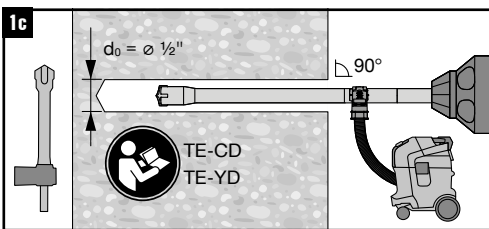
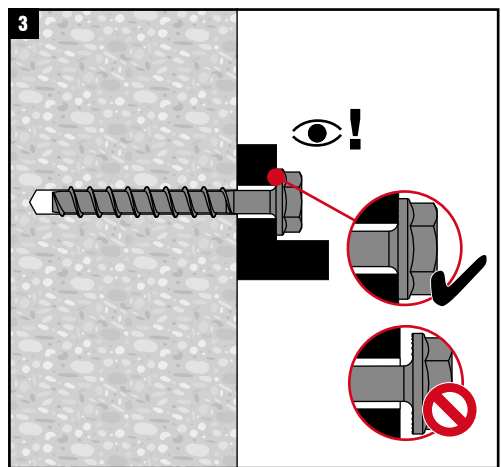
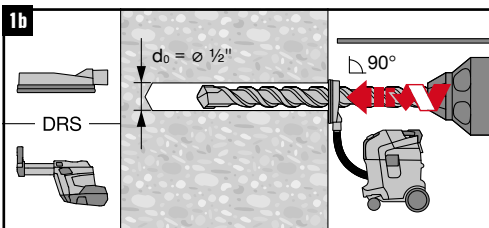
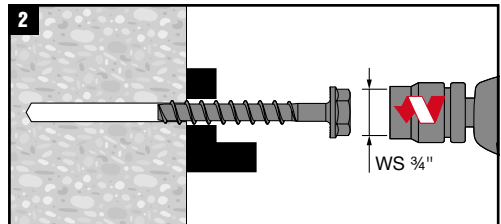
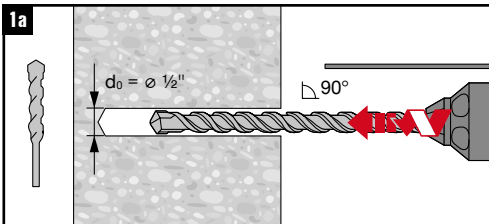


KH 1/2"	$h_1^*$	$h_{nom1}$ = 2.25"	$h_{nom2}$ = 3.0"	$h_{nom3}$ = 4.25"
		$t_{fix1}$ max (in.)	$t_{fix2}$ max (in.)	$t_{fix3}$ max (in.)
1/2" × 3"	3 3/8" - $t_{fix}$	3/4"	-	-
1/2" × 3 1/2"	3 7/8" - $t_{fix}$	1 1/4"	1/2"	-
1/2" × 4"	4 3/8" - $t_{fix}$	1 3/4"	1"	-
1/2" × 4 1/2"	4 7/8" - $t_{fix}$	2 1/4"	1 1/2"	1/4"
1/2" × 5"	5 3/8" - $t_{fix}$	2 3/4"	2"	3/4"
1/2" × 6"	6 3/8" - $t_{fix}$	3 3/4"	3"	1 3/4"

		$h_{nom} < 3 1/4''$	$h_{nom} \geq 3 1/4''$	
	Nuron SID 4-22	✓	✓	✗
	Nuron SID 6-22	✓	✓	✗
	Nuron SIW 4-22	✓	✓	✓
	Nuron SIW 6-22	✗	✓	✗
	CPC SIW 22/18-A	✓	✓	✓
	CPC SIW 22T/18T-A	✓	✓	✓
		45 ft-lb	45 ft-lb	45 ft-lb



\*For non-hole cleaning installation (steps 1.a or 1.b), make sure to drill deep enough to achieve  $h_1$ , taking into account the depth of debris remaining in the hole

