

FIRESTOP COMPOSITE SHEET CFS-COS

Applications

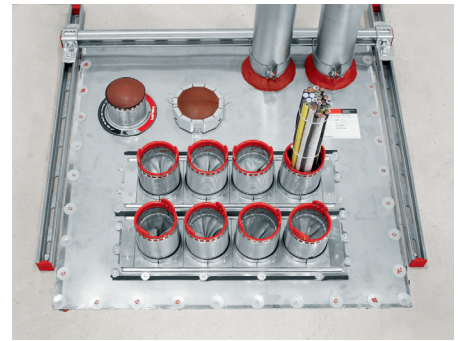
- For use with large wall and floor fire-rated assemblies
- Compatible with Hilti Speed sleeve and gangplate for floor gang applications
- Intumescent sheet with #304 stainless steel backing for firestopping large openings

Advantages

- For use with fire-rated assemblies (up to 4 hrs)
- Compatible with Hilti sleeve devices for easy cable management
- Can be fastened using Hilti GX/BX tools — no need to drill or set anchors
- Multi-board systems allow very large openings
- Non-magnetic #304 stainless steel construction ensures good weatherability and no inductive loss in cables
- Fast installation system requires fewer anchors

Installation instructions

- See Hilti literature or third-party listings for complete application and installation details



Technical Data

| | |
|--|---|
| Application temperature range | -22 to 118 °F (-30 to 48 °C) |
| Temperature resistance range | -22 to 250 °F (-30 to 121 °C) |
| Expansion ratio (unrestricted, up to) | 1:18 |
| Surface burning characteristics UL 723 (ASTM E84) | Flame spread: 5 Smoke development: 20 |
| Shelf life ¹⁾ | Not relevant |
| Storage and transportation temperature range | -22 to 118 °F (-30 to 48 °C) |
| Color | Silver |
| Acoustics performance | Test report available |
| Dimensions (LxWxH) | 36 x 36 x 0.15 in 41 x 36 x 0.15 in 52 x 28 x 0.15 in |
| Intumescent | Yes |

¹⁾ at 77°F (25°C) and 50% relative humidity; from date of manufacture