

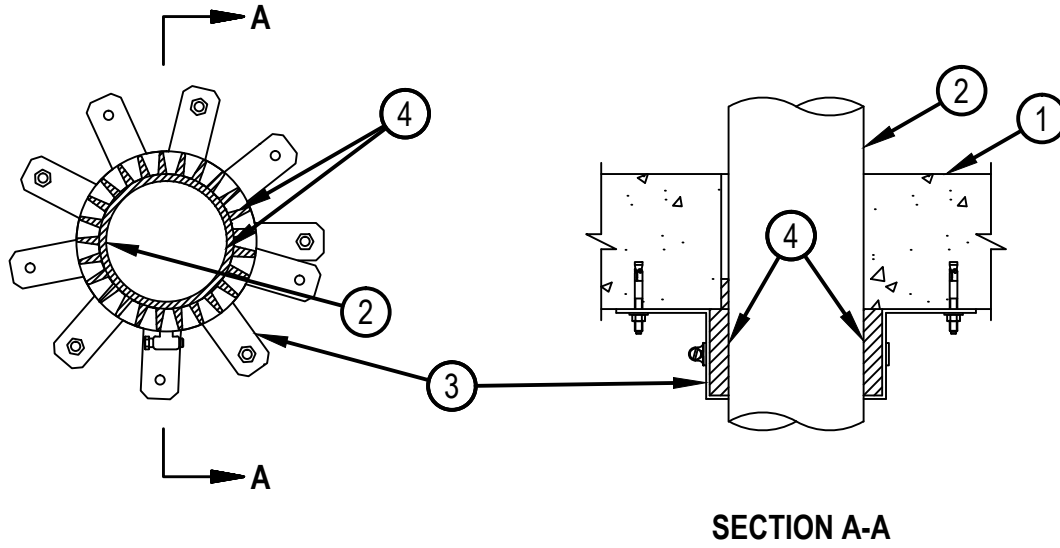


Classified by
Underwriters Laboratories, Inc.
to UL 1479

System No. C-AJ-2095

F Rating - 3 Hr
T Rating - 2-1/2 Hr

CAJ2095



1. Floor or Wall Assembly — Min 4-1/2 in. (114 mm) thick reinforced lightweight or normal weight (100-150 pcf or 1600-2400 kg/m³) concrete. Wall may also be constructed of any UL Classified Concrete Blocks*. Max diam of opening is 5 in. (127 mm). See Concrete Blocks (CAZT) category in the Fire Resistance Directory for names of manufacturers.
2. Nonmetallic Pipe — Nom 4 in. (102 mm) diam (or smaller) Schedule 40 solid-core polyvinyl chloride (PVC) or SDR 17 chlorinated polyvinyl chloride (CPVC) pipe for use in closed (process or supply) or vented (drain, waste or vent) piping systems. One pipe to be installed either concentrically or eccentrically within the firestop system. The annular space shall be min 0 in. (point contact) to max 1/2 in. (13 mm). Pipe to be rigidly supported on both sides of floor or wall assembly.
3. Steel Collars — Collar fabricated from coils of precut min 0.017 in. (0.43 mm) thick (No. 28 MSG) galv steel available from the sealant manufacturer. Collar shall be nom 1-3/4 in. (44 mm) deep with 1 in. (25 mm) wide by 2 in. (51 mm) long anchors tabs on 2 in. (51 mm) centers for securement to floor or wall assembly. The opposite side incorporates retainer tabs, 1/2 in. (13 mm) wide by 3/16 in. (5 mm) long, prebent toward the pipe surface. Collar shall be wrapped around pipe maintaining a 1 in. (25 mm) distance between pipe and collar, and overlapping min 1 in (25 mm) at seam. Collar secured to concrete slab with 1/4 in. (6 mm) diam by 1-3/4 in. (44 mm) long steel expansion type masonry fasteners or 0.145 in. (3.7 mm) diam by 1-1/4 in. (32 mm) long powder actuated fasteners utilizing a 1-7/16 in. (36.5 mm) diam by 1/16 in. (1.6 mm) thick steel washer. In floor assemblies, one collar to be used at the bottom of the concrete floor only. In wall assemblies, a collar is used on both surfaces. After sealant is installed (Item 4), the collar shall be compressed around the pipe using a 1/2 in. (13 mm) wide by 0.028 in. (0.7 mm) thick stainless steel band clamp fastened at the collar mid-height.
4. Fill, Void or Cavity Material* — Sealant — Min 1-1/2 in. (38 mm) thickness of fill material applied within the annulus, flush with bottom surface of floor or with both surfaces of wall and applied to completely fill the steel collar.
HILTI CONSTRUCTION CHEMICALS, DIV OF HILTI INC — FS611A or FS-ONE Sealant or FS-ONE MAX Intumescent Sealant

* Indicates such products shall bear the UL or cUL Certification Mark for jurisdictions employing the UL or cUL Certification (such as Canada), respectively.



Hilti Firestop Systems

Reproduced by HILTI, Inc. Courtesy of
Underwriters Laboratories, Inc.
January 09, 2015